



Light Passenger Vehicles: Loss of control of vehicle

GENERIC HIERARCHY OF CONTROL SAMPLE

1st October 2021

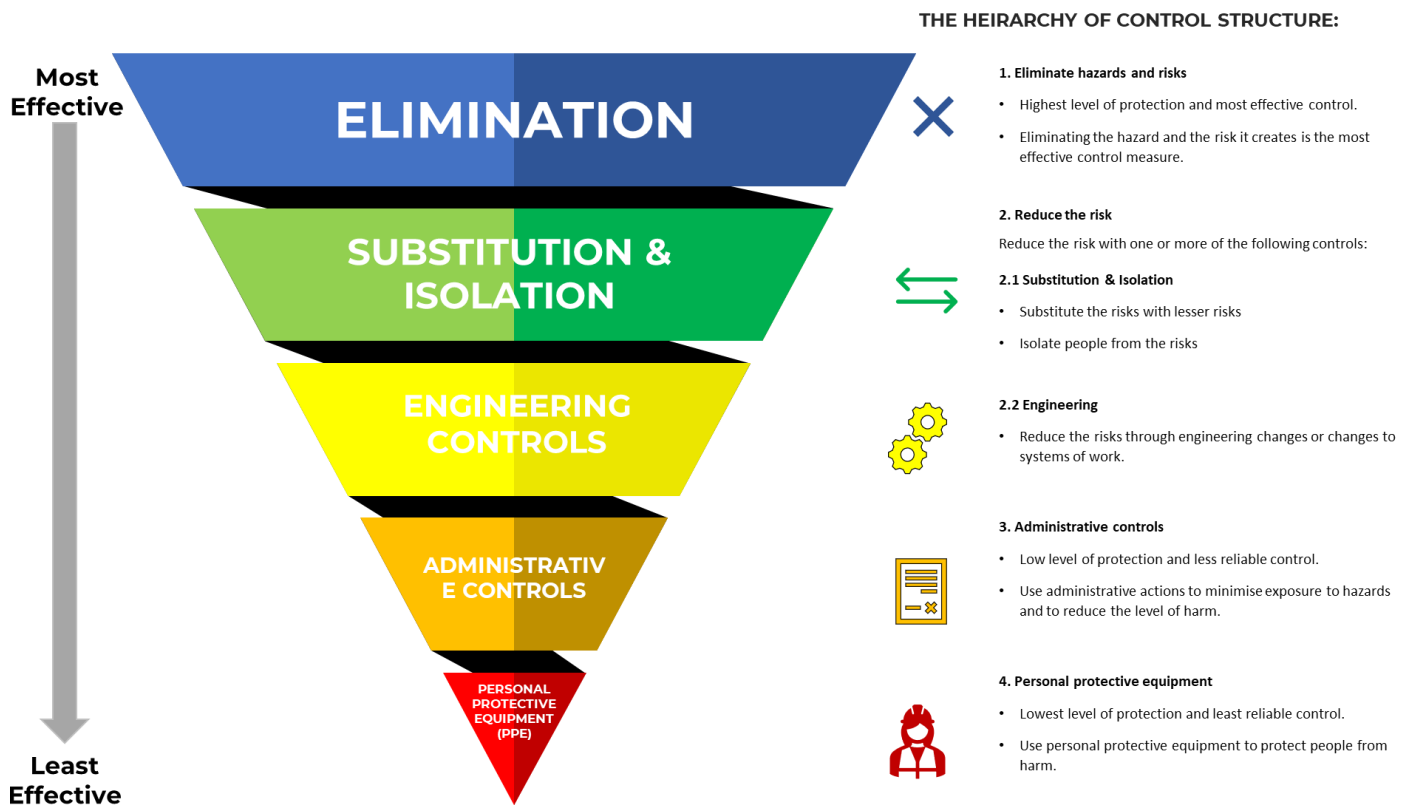


Hierarchy of Controls

The hierarchy of control is a system for controlling risks in the workplace. It is a step-by-step approach to eliminating or reducing risks and ranks risk controls from the highest level of protection and reliability through to the lowest and least reliable protection. Risks should be reduced to the lowest reasonably practicable level by taking preventative measures, in order of priority.

Eliminating the hazard and risk is the highest level of control in the hierarchy, followed by reducing the risk through substitution, isolation, and engineering controls, then reducing the risk through administrative controls. Reducing the risk with the use of protective personal equipment (PPE) is the lowest level of control.

The following element shows the structure of the hierarchy of control, from most effective control to least effective.



Consider various control options and effective elimination controls should always be the priority. If elimination is not reasonably practicable, minimise the risk in the circumstances. Reducing the risk may involve a single control measure or a combination of different controls that work together to provide the highest level of reasonably practicable protection.

As an employer you must consult your workers and their health and safety representatives (HSRs), if there are any, when deciding on risk controls.

Disclaimer: The information provided by ShopCare in this document is for general information purposes only and does not constitute legal advice. ShopCare does not accept any responsibility or legal liability to you arising from your use or reliance on the information contained in this document. Specific advice should be sought from qualified professionals in respect of your own situation before relying on any aspect of the content of this document or associated materials.

Elimination	Substitution	Isolation	Engineering Controls	Administrative Controls	PPE (Must be suitable for the task being performed)
Eliminate exposure to road traffic, and consider alternatives to travel such as Zoom, Microsoft Teams or a phone call.	Avoid the use of a motor vehicle and consider safer modes of transport such as buses, trains, and aeroplanes.		ANCAP vehicle rating of 4 to 5.	<p>Policies:</p> <ul style="list-style-type: none"> • Vehicle and vehicle usage • Cruise Control • Drug and Alcohol • Licenced driver • Pre-employment screening • Health, Safety & Wellbeing Induction <p>Training</p> <ul style="list-style-type: none"> • Defensive Driving • Driver skills and knowledge competency programme • Driving to conditions campaign (seasons and weather) • Licence Monitoring programme • Road Rules • Signage, speed control, blind spots etc • Health, Safety & Wellbeing Induction <p>Proactive Monitoring & Review</p> <ul style="list-style-type: none"> • Licence, vehicle etc inspections • Licence monitoring programme • Active maintenance of telematics by leaders <p>HSW programmes</p> <ul style="list-style-type: none"> • Lone worker • Fatigue Management • In vehicle ergonomic assessments • Drug and Alcohol <p>Technology/Innovation</p> <ul style="list-style-type: none"> • Mobile hands-free system • Telematic system 	<ul style="list-style-type: none"> • In vehicle storage, tie down procedures and equipment • Roll Bars and Roll Cages • Sunglasses or driving glasses to reduce sunstrike etc.

IMPORTANT: All businesses should conduct a thorough risk assessment to ensure all risks and controls have been identified. This hierarchy of control document is deemed a generic guide and does not consider each business environment.

Disclaimer: The information provided by ShopCare in this document is for general information purposes only and does not constitute legal advice. ShopCare does not accept any responsibility or legal liability to you arising from your use or reliance on the information contained in this document. Specific advice should be sought from qualified professionals in respect of your own situation before relying on any aspect of the content of this document or associated materials.